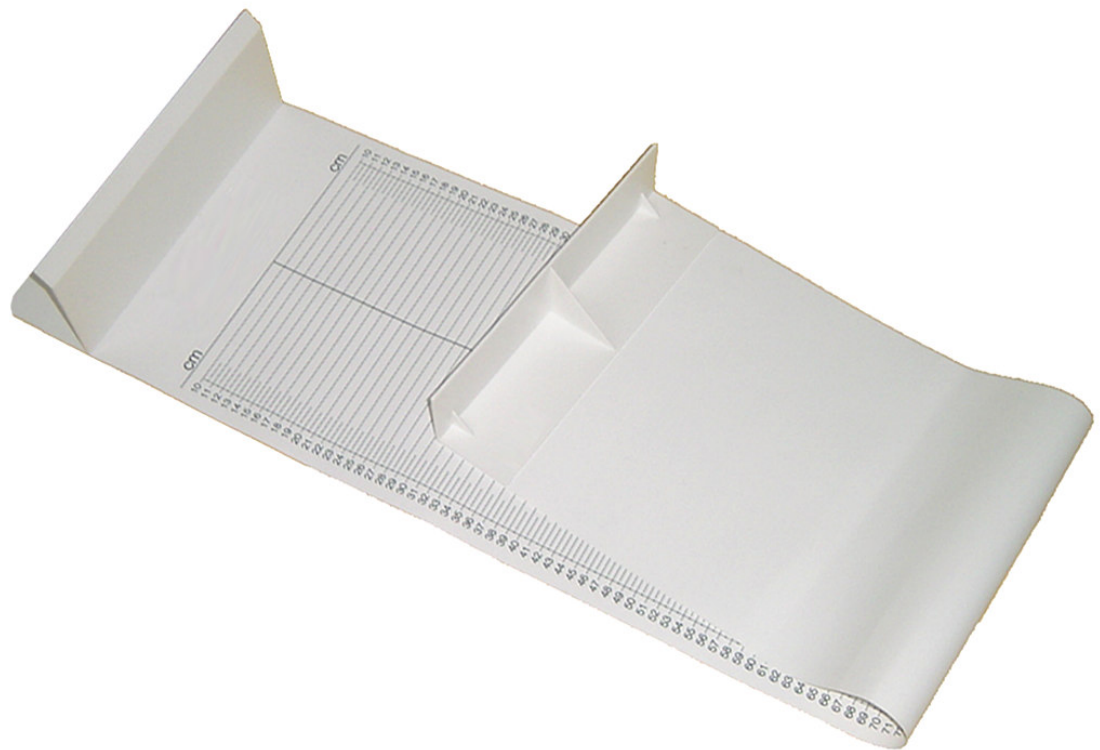


# Operating Manual




ADE Special  
Mechanical Baby Measuring Mat

MZ10027



ADE GmbH & Co.  
Hammer Steindamm 27 – 29

22089 Hamburg / GERMANY

 +49(40)432776-0  
Fax +49(40)432776-10  
E-mail: [info@ade-hamburg.de](mailto:info@ade-hamburg.de)

## Preparation and use of the measuring mat

Your ADE Mechanical Baby Measuring Mat is a quality product. In order to achieve best possible results please read and follow strictly the instructions of the Operating Manual:

This baby measuring mat is used by pediatricians in pediatric hospitals and by midwives visiting young mothers. Simply to be stored and very light the mat can be rolled up for storage. The two holes on the head part make hanging on the wall possible.

### **Before measuring respect the Safety Advices:**

- Place the measuring mat on a level surface which offers room enough for the equipment and the baby. Make sure the baby cannot fall down.
- Never leave the baby unattended on the measuring mat.
- The measuring mat must regularly be cleaned (see also chapter Cleaning and Maintenance).

### **Measuring**

- Place the baby on the safely secured mat.
- In order to achieve the best possible result make sure the head of the baby has been placed closest to the head part.
- Using your right hand gently stretch the legs of the baby by slightly pressing the knees down.
- The foot part of the mat has to be moved down to baby's feet in horizontal position.
- For better safety and measuring results it is advisable to measure and handle the baby with two persons.
- The measuring result can be read either in cm or inch directly from the mat.

## Cleaning and Maintenance

### **Cleaning:**

- Take care the mat is always cleaned to avoid infections.
- For cleaning use common disinfection products or soft cleaning fluids on a damp cloth.
- Do not use any aggressive cleaning material.

### **Storage and Transport**

Please keep all original parts and pieces for an eventual sending back of the equipment in order to avoid any possible damage during transport which automatically leads to non warranty.

### **Warranty – Liability**

ADE will repair or replace this product within a period of 2 years from date of delivery applying to defects occurred due to poor material or workmanship (presentation of invoice is necessary). Warranty does not include natural wear, damages caused by incorrect or negligent handling, overuse or unsuitable or improper storage. The cost of transport will be borne by the customer should the equipment be located anywhere other than the customer's premises. In the event of transport damage, claims under warranty can be accepted subject to using the complete original packaging and the equipment secured the way it was packed and secured originally. All the packaging should therefore be retained.

Customers abroad are kindly requested to contact their local dealer for any warranty claim, customer service and spare parts.

### **Disposal of the equipment:**

Once the measuring mat needs disposal strictly follow the rules of the national directives applicable.

### **Technical Data**

Measuring range:	100 – 1.000 mm / 4 – 39 3/8 inch
Graduation:	5 mm / 1/4 inch
Dimensions: (W x H x D)	1180 x 135 x 280 mm
Weight:	500 g

<u>Supplier:</u>	ADE GmbH & Co. Hammer Steindamm 27 – 29 22089 Hamburg Germany
------------------	--